



Advanced Exchequer Analytics

Empower you and your colleagues with a multi-dimensional view of your business, in real time. Using data from multiple software solutions across your organisation, the analytics module for Advanced Exchequer delivers unrivalled insight and analytic capabilities on any device.

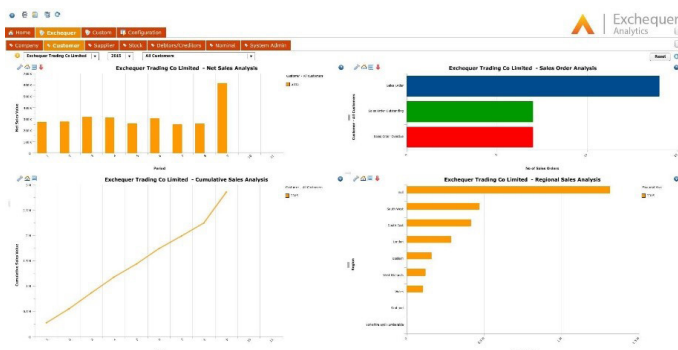
The Challenge

Directors are increasingly faced with multiple demands, being required to ensure the effective running of their business, whilst maintaining a multi-dimensional view of their business performance, analysing data for key decision-making processes and reporting on information such as KPIs, SLAs, stock, cash flow and pipeline to vital stakeholders. As a result, they are consistently faced with competing demands and time pressures.



The Solution

Exchequer Analytics allows users to gain a multi-dimensional view of their business, anywhere, anytime, and on any device. It offers intuitive dashboards comprised of live data from all business areas and software solutions, allowing users to drill-down into different data sets, specific source data, comparatively or by exception, for instant and meaningful analysis. Exchequer Analytics enables users to meet evolving business demands, optimize decision-making processes and drive business performance through its enhanced business intelligence functionality.



Major Benefits

Your data, from multiple locations, in one system

View dashboards containing information from multiple software solutions across your business, providing you with a holistic view of your business performance.

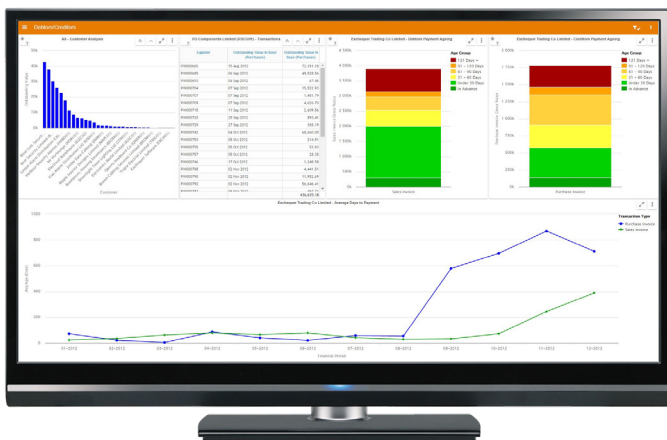
Your business in real time

The Analytics module for Advanced Exchequer offers up-to-the-minute business information which can be shared with key stakeholders instantly, anytime, anywhere and on any device.



Optimize and evolve your business performance

Build enhanced dashboards in line with your business structure, specific departments or colleagues, and create and assign KPIs based on your budget planning. Exchequer Analytics enables you to proactively monitor costs, the performance of such indicators through colour-coded value banding and to be alerted when KPIs move outside normal levels for effective business performance management.



Scheduled reporting

Your business, your way. Configure and schedule your dashboards to be automatically emailed to key stakeholders, reducing manual labour, cutting pressures on time and driving efficiency.

Supporting standards and quality

Exchequer Analytics can support statutory reporting and compliance requirements, through quick and easy access to multiple data sets, providing you with the peace of mind that you're consistently meeting financial standards and professional standards of quality.

More information

w oneadvanced.com
t +44(0)845 160 6162
e info@oneadvanced.com

Head Office, Ditton Park, Riding Court Road, Datchet, Slough, Berkshire SL3 9LL

Advanced Computer Software Group Ltd, registered in England and Wales, company number 5965280. Registered office: 230 City Road, London EC1V 2TT. Advanced Computer Software Group Ltd recognises the trademarks of other companies and their respective products in this document.

Exchequer Analytics



Enhanced analysis

Compare your data over previous weeks, months, quarters or with any historic period, view data by exception or filter to show any data outside of set parameters. Exchequer Analytics enables you to conduct deeper, refined and more meaningful analysis to optimize your decision-making processes.