



# Advanced MTD

## **Bridging your VAT Return to HMRC**

File your MTD VAT return electronically to HMRC from accounting records stored in spreadsheets or non-compliant accounting systems, using the Pegasus Opera 3 Advanced MTD submission bridging tool.



## **Making Tax Digital**

Most VAT-registered businesses need to use software to submit their VAT Returns to HMRC for VAT periods starting on or after 1st April 2019. HMRC allow you to continue to use your existing accounting software and then use bridging software to submit your VAT Return. Opera 3 Advanced MTD is such bridging software.

## **Software solution**

Opera 3 Advanced MTD is a software application that allows you to have a compliant solution while continuing to use your existing accounting package. You just need to export your VAT return to a data file and then use the Opera 3 Advanced MTD to submit that VAT return to HMRC electronically in a compliant format.

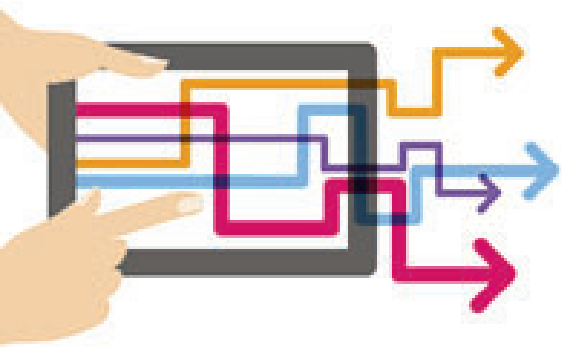


## A flexible way to help you stay compliant

Opera 3 Advanced MTD comes in two variants:

- 1. As an integrated module of Opera 3**, for existing users of Opera 3 who need to consolidate their own VAT returns with other companies in the group who keep their data in spreadsheets or non-compliant systems.
- 2. As a stand-alone application**, if your business simply requires bridging software between a non-compliant system and HMRC.

## How it works



**Step 1:** Use Opera 3 Advanced MTD to sign up for MTD with HMRC and provide the relevant information such as your VAT Registration Number, email address etc.

**Step 2:** At the end of your VAT period, calculate the VAT return in your existing accounting system.

**Step 3:** Export the figures in the 9 boxes on the VAT return as a CSV file.

**Step 4:** Import that CSV file into Opera 3 Advanced MTD.

**Step 5:** Use Opera 3 Advanced MTD to electronically submit your VAT return to HMRC. Once it's been received, HMRC will issue a receipt and will update your VAT account with the dates for the next VAT Period and the date of when that submission will be due. These can viewed within Opera 3.

## Frequently Asked Questions

### Can I still use my spreadsheets to hold my digital accounting records?

Provided a spreadsheet maintains the VAT digital records as prescribed by HMRC, you can continue to use spreadsheets. However, in order to submit the VAT return to HMRC, you would need to use functionally compatible software such as Opera 3 Advanced MTD.

### My accounting system is not MTD compliant, can I continue to use it?

Yes, but you need to use bridging software to submit the VAT return electronically to HMRC. This is where Opera 3 Advanced MTD comes in: it will allow you to make these submissions.

### What data does it send to HMRC?

The submission file contains the nine-box VAT return figures along with the VAT period they belong to.

### Have the filing dates changed?

No, the frequency of the submissions remains the same, as does the date by which you have to pay HMRC.

### How do I file my EC Sales List?

EC Sales Lists are not yet part of MTD, so you continue to file them as you currently do.

